

Bass D-1

Symphony No. 9, Mvt. 4, Op. 125

L. van Beethoven

Allegro assai $\text{♩} = 80$

Contrabass



p

6



11



cresc.

p

Bass D-2

Brandenburg Concerto No. 2, Mvt. 3

J.S. Bach

Allegro assai

Contrabass

The first staff of music is in bass clef, 2/4 time, and B-flat major. It begins with a quarter rest, followed by a series of eighth and sixteenth notes, including some beamed sixteenth-note patterns.

6

The second staff continues the piece from measure 6. It features a mix of eighth and sixteenth notes, with some beamed sixteenth-note passages.

ff

The third staff continues from measure 11. It features a mix of eighth and sixteenth notes, ending with a quarter rest and a double bar line.

Bass D-3

Overture "Russlan and Ludmilla"

Mikhail Glinka

Presto

Contrabass

ff

6

11

16

f

Bass D-4

Symphony No. 4 ("Italian"), Mvt. 4, Op. 90

SALTARELLO

Felix Mendellsohn

Presto₃

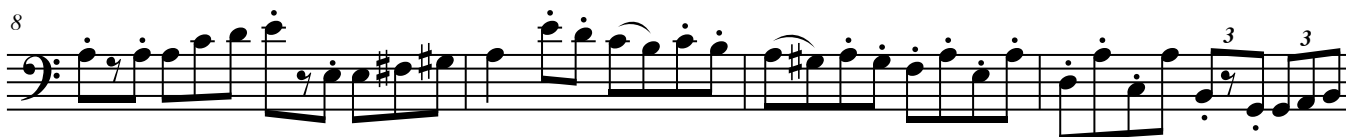
Contrabass



ff



ff



ff

Bass D-5

Symphony No. 40, K. 550, Mvt. 1

W.A. Mozart

Allegro molto

Contrabass

p *f*

5

sim.

8

13

16

sim.

19